

## iMini Plus Dry Ice

The iMini Plus Dry Ice Logger is capable of measuring and recording extreme temperatures from -100°C to 40°C. It is the ideal solution for ensuring safe transport and storage of perishables held in dry ice.

### Features

- Temperature range of -100°C to 40°C (-148°F to 104°F)
- 1 meter Teflon cable connects stainless steel temperature probe to the data logger
- Start & stop button features located on the face of the unit
- Bookmarking capabilities
- Large LCD Display with multifunctional viewing
- Large memory capacity; 8048 readings
- Available as a single trip or multi-use unit



### Ideal Uses

- Pharmaceuticals
- Medical Samples
- Biologicals
- Diagnostic Specimens
- Organs
- Human/Animal Tissue
- Clinical Trials
- Serums
- Enzymes
- Food & Beverage



Certifications:

**2  
Year  
Warranty**

**bsi.**

**21 CFR  
Part 11**

**CE**

**EN12830  
Compliant**

**NIST  
Traceable**

## Specifications

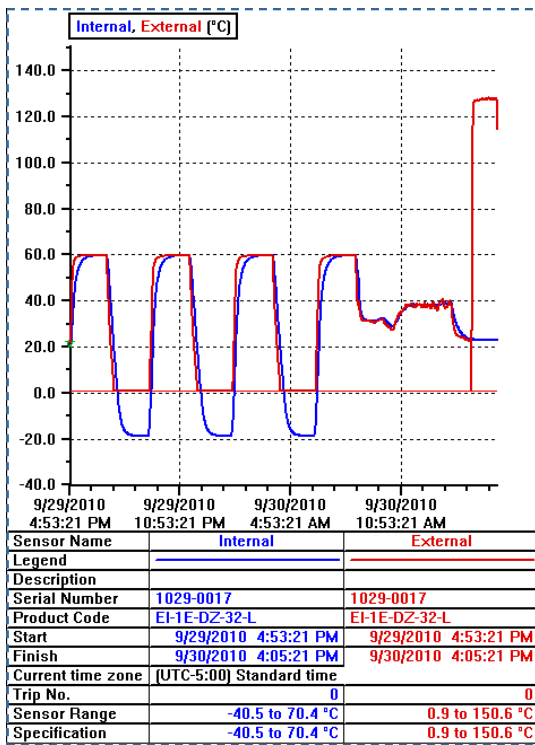
Description	Specifications
Product Code	MP-OE-N-8-L (multi-use), MP-ST-N-8-L (single trip)
Memory Options	8048 Readings
Program Interval	5 seconds-18 hours
Time Accuracy	+/- 1 minute per month
Sensors	External
Temperature Range	-100°C to 40°C (-148° to 104°F)
Temperature Accuracy	From -100°C to -80°C +/-1.0°C (-148°F to -112°F +/- 1.8°F) From -79°C to -10°C +/- 0.7°C (-111°F to 14°F +/- 1.3°F) From -9°C to 40°C +/- 0.6°C (15°F to 104°F +/- 1.0°F)
Resolution	0.1°C (0.1°F)
Sensor Response Time	T90 of 5 minutes
LCD Operating Range	-20°C to 70°C (-4°F to 158°F)
Alarm Thresholds	Two
Alarm Configuration	High & low
Bookmark	Yes
Preprogram Option	User programmable; preprogramming available
Start Option	Push button and/or timer
Auto Restart	No
Start Delay	Yes
Stop Option	Yes (button can be disabled)
Size	83x57x17mm (excluding lug & external sensor)
Weight	70 grams (including battery)
Case Material	Polycarbonate/ABS
Battery	User replaceable lithium battery; 3v coin cell
IP Rating	IP 64 (with DB9 cap on)
Warranty	2 year excluding battery (multit-use) 1 trip excluding battery (single trip)
Calibration	NIST traceable upon request
Accuracy Certificate	Yes
Other Certification	ISO 9001:2008, CE, RoHS, EN 12830
Battery Life	1-2 years (depending on usage)
Interface	USB to serial
Software	Console Pro
Default File Format	.LCF
Data Export	TXT, CSV, SYLK & LCF
Security	Password protected (programmable using Console Pro Software)

## Console Pro

### Features:

- Program and configure logger
- Download & view data analysis
- View current readings
- Export data in CSV & TXT format
- Re-arm function

### Graph



### Readings & Summary

Index	Elapsed Time	Date	Time	Freezer (°C)
Serial Number				1301-0011
H/w version				2.2x
Trip No.				1
Description				
Battery				92.5 %
Original time zone				(UTC+8:00) Standard time
Current time zone				(UTC-5:00) Standard time
Start		6/17/2013	5:00:00 AM	
Finish		6/17/2013	9:35:00 PM	
Sampling				5 Minutes
Readings				200 [995 Minutes]
Active				-40.5 to 70.4 °C
Specification				-35.0 to -15.0 °C
Average				-20.5
Highest				24.7
Lowest				-24.9
PHI Aerobic				0.74
PHI Anaerobic				0.52
MKT				-1.01
Total No. of Pulses				-342.94
Growing Degree Day				0.0
Out Of Specification				80 Minutes
				10 Minutes from -14.9 to -10.0
				5 Minutes from -9.9 to -5.0
				5 Minutes from -4.9 to 0.0
				450 Seconds from 0.1 to 5.0
				5 Minutes from 5.1 to 10.0
				5 Minutes from 10.1 to 15.0
				5 Minutes from 15.1 to 20.0
				2250 Seconds from 20.1 to 25.0
1	00:00:00	6/17/2013	5:00:00 AM	1.8
2	00:05:00	6/17/2013	5:05:00 AM	-1.5
3	00:10:00	6/17/2013	5:10:00 AM	-7.7
4	00:15:00	6/17/2013	5:15:00 AM	-11.6
5	00:20:00	6/17/2013	5:20:00 AM	-14.7
6	00:25:00	6/17/2013	5:25:00 AM	-16.9
7	00:30:00	6/17/2013	5:30:00 AM	-18.5

### Views

### Links

### Analysis

